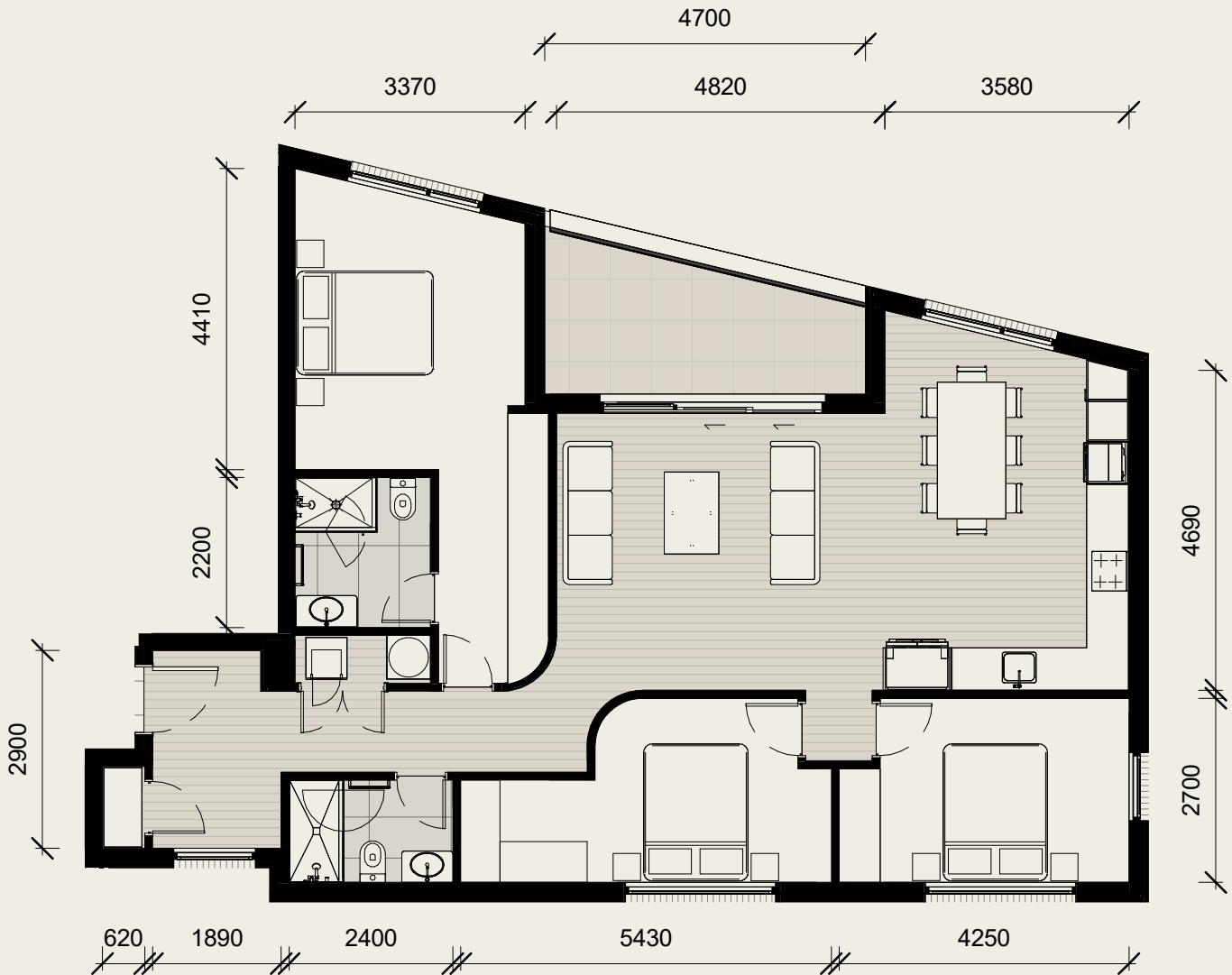


TYPE F1 - 3 BED 401

NORTH FACING

3 Bed + Balcony

GFA* 119m² + 10m²



SCALE 1: 100 @ A4



*GFA: Floor areas stated are Gross Floor Area. Gross Floor Area is measured from the outside face of the exterior walls and to the centreline of an inter-tenancy or common area interior wall.

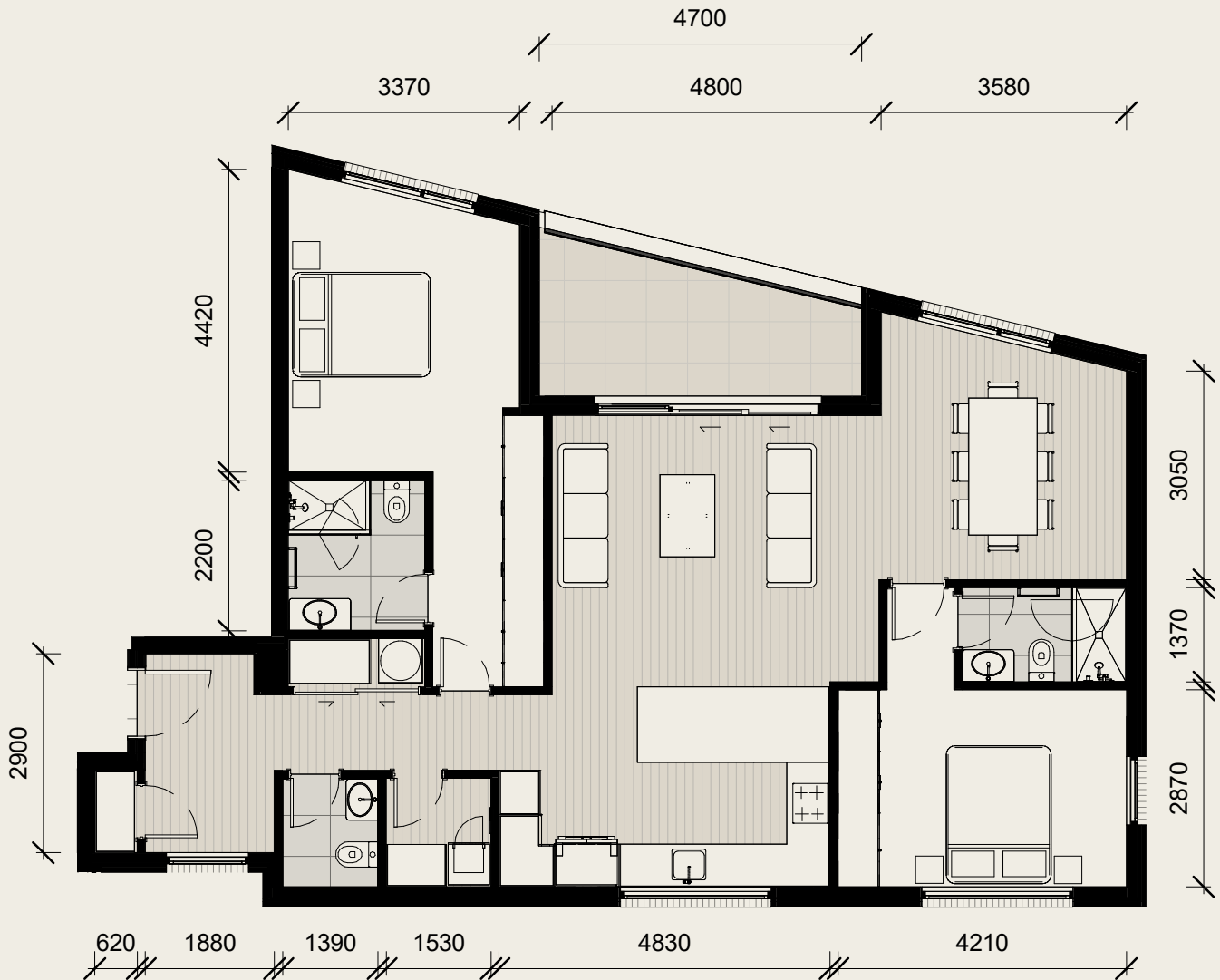
Disclaimer: Floor plans are indicative. Final floor plan layout, design and measurements may differ from this representation in accordance with the terms of your sale & purchase agreement.

TYPE F2 - 2 BED 401

NORTH FACING

2 Bed + Balcony

GFA* 119m² + 10m²



SCALE 1: 100 @ A4



*GFA: Floor areas stated are Gross Floor Area. Gross Floor Area is measured from the outside face of the exterior walls and to the centreline of an inter-tenancy or common area interior wall.

Disclaimer: Floor plans are indicative. Final floor plan layout, design and measurements may differ from this representation in accordance with the terms of your sale & purchase agreement.